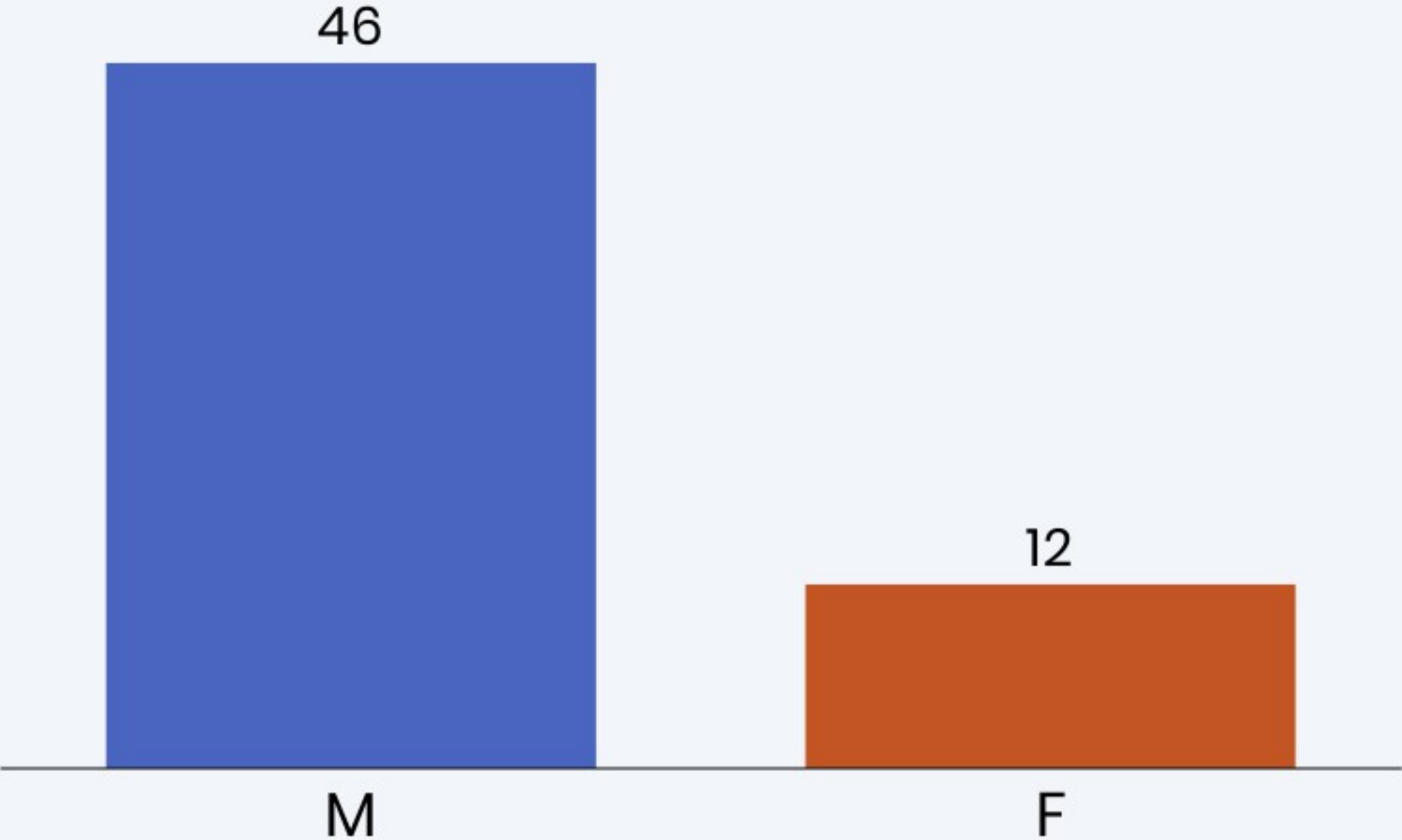


My gender:



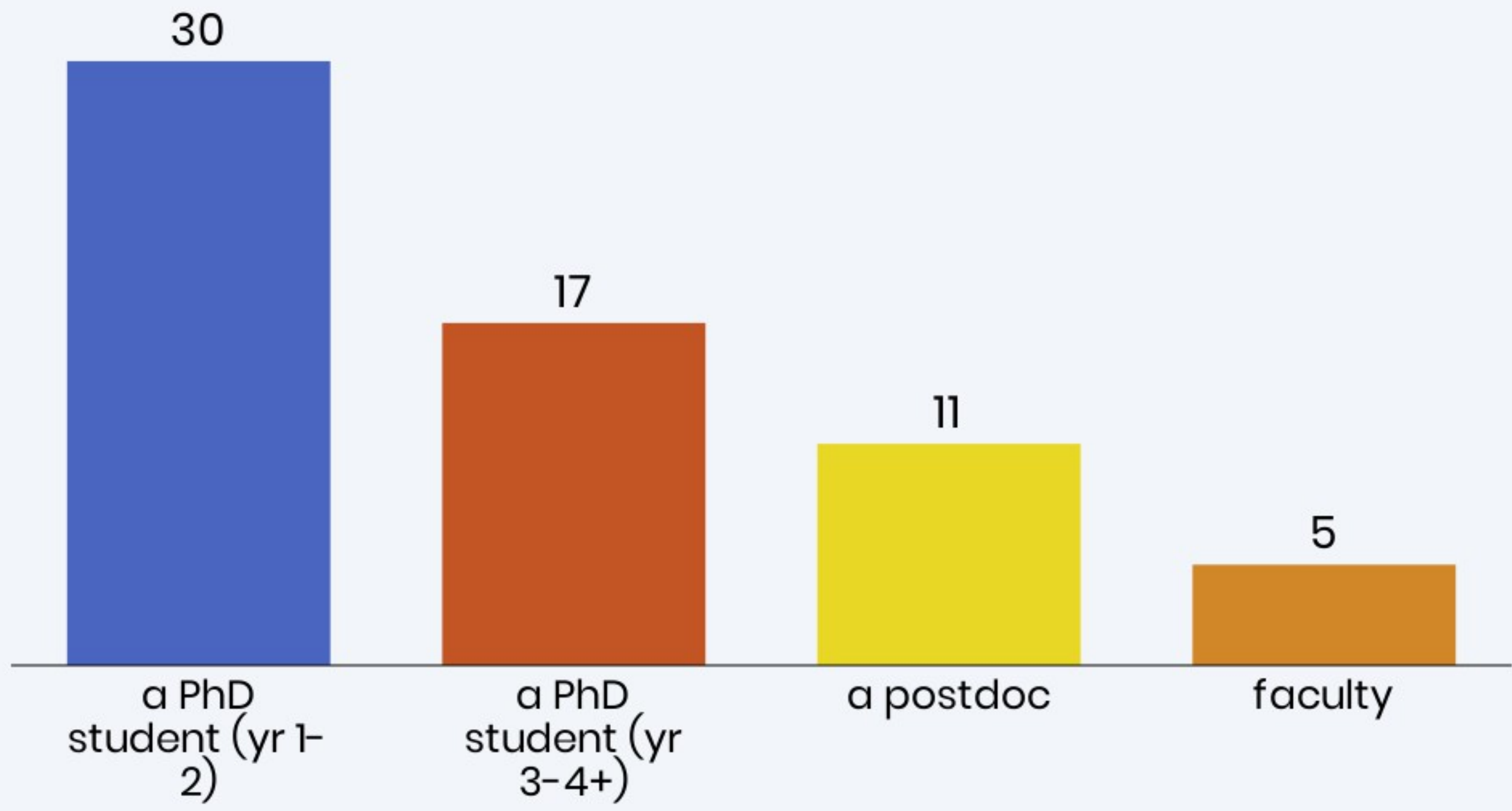
Country you are from?



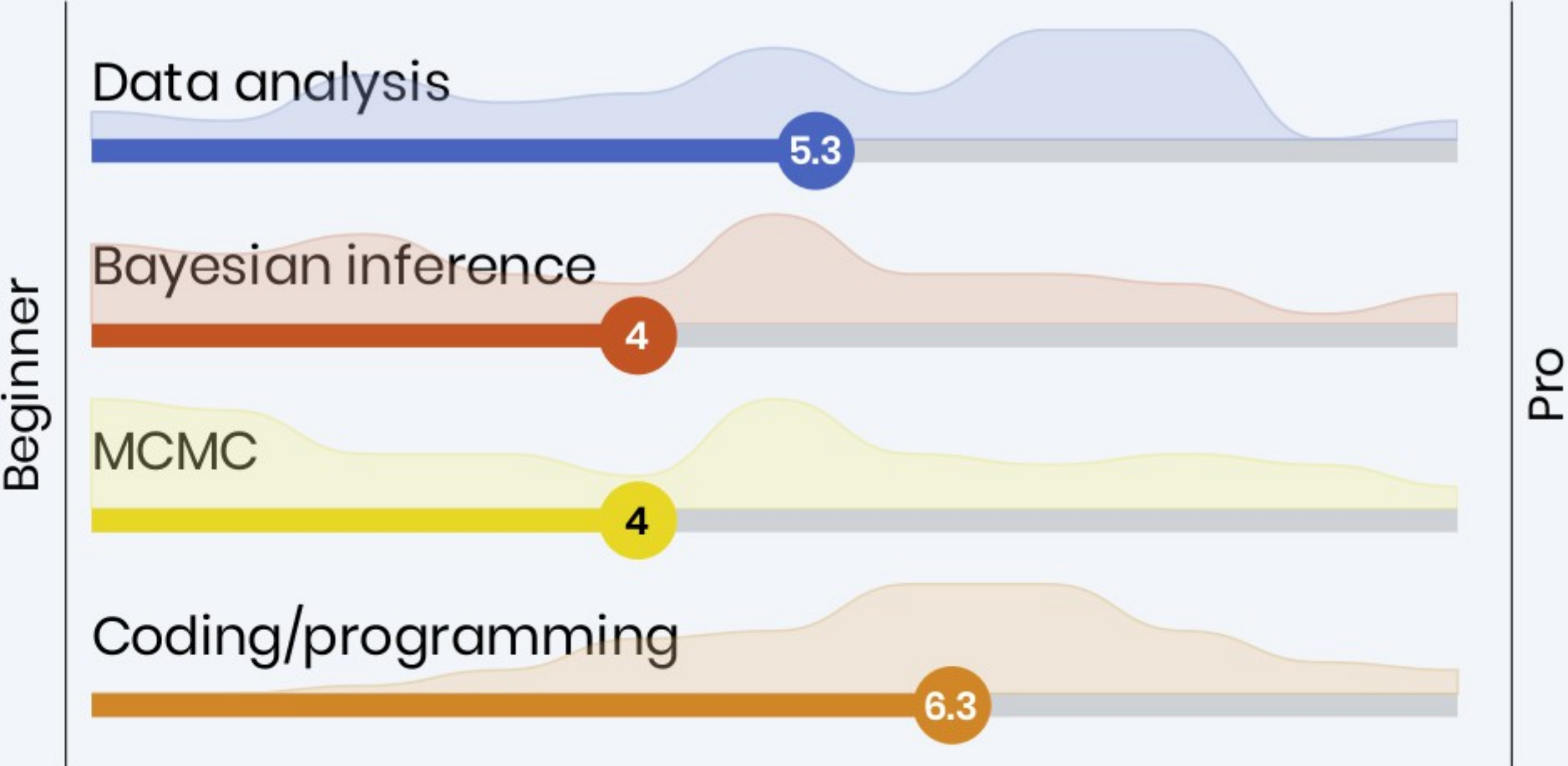
Country of your institution?



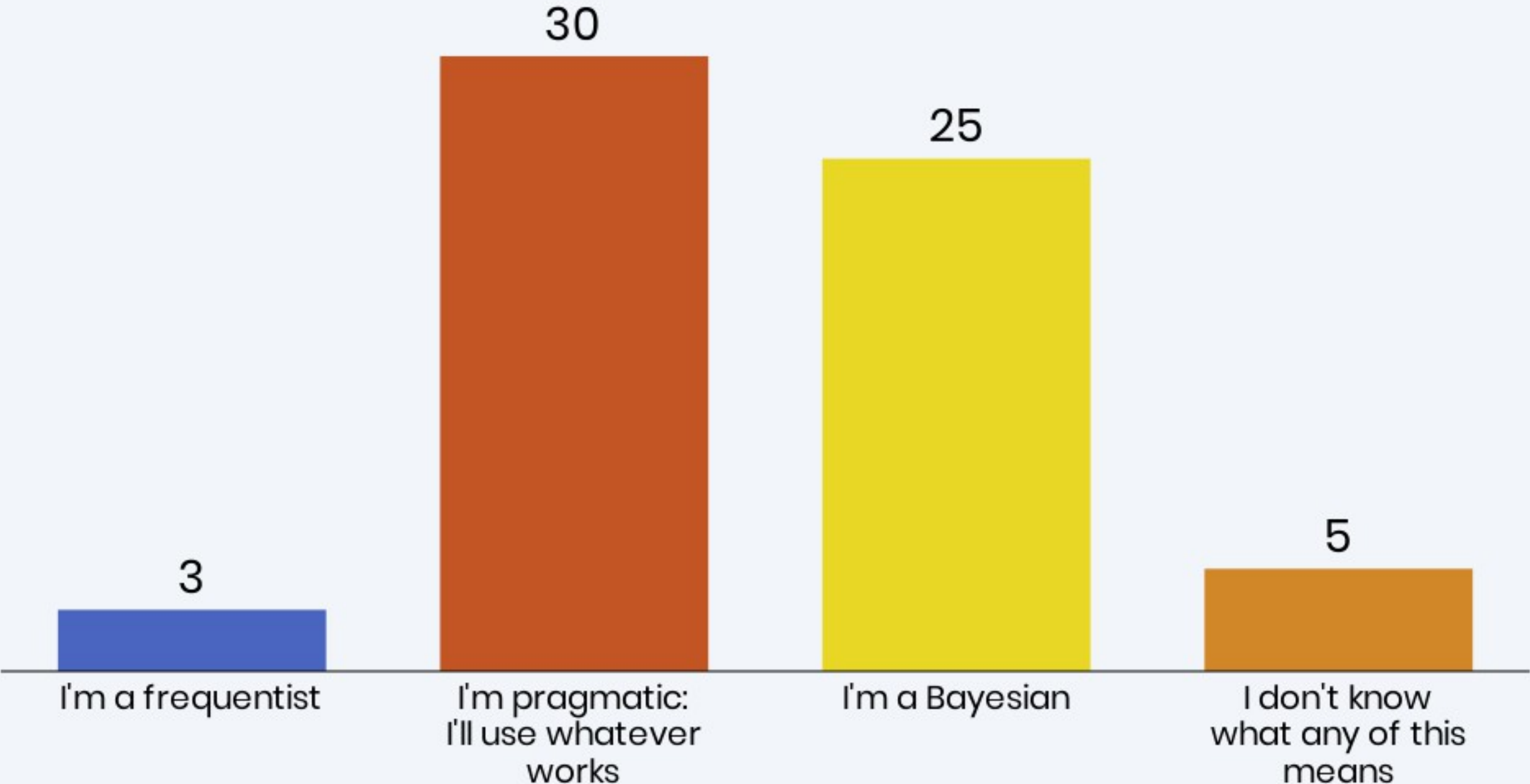
I am:



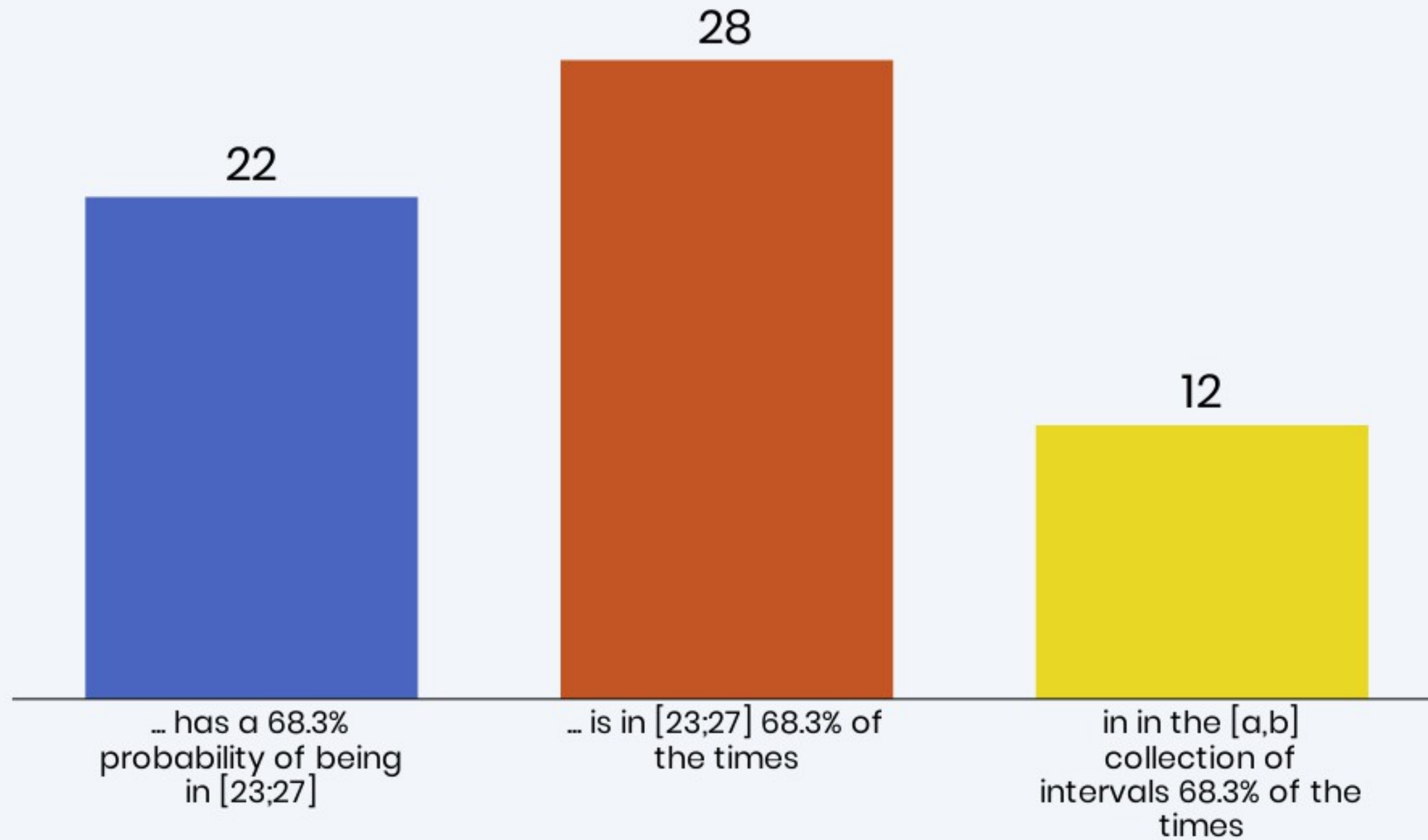
Rate your experience in the following areas:



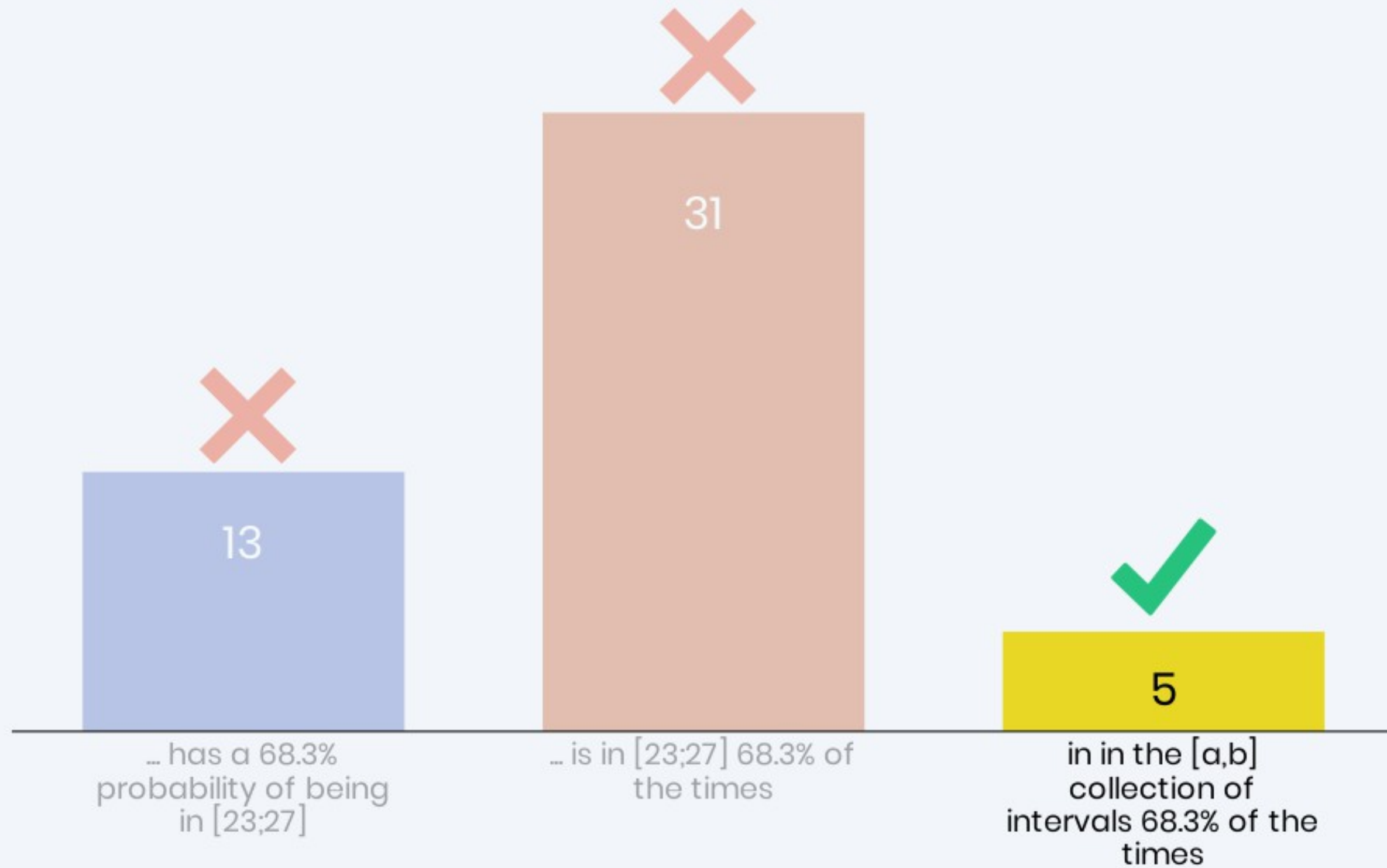
My outlook on probability is:



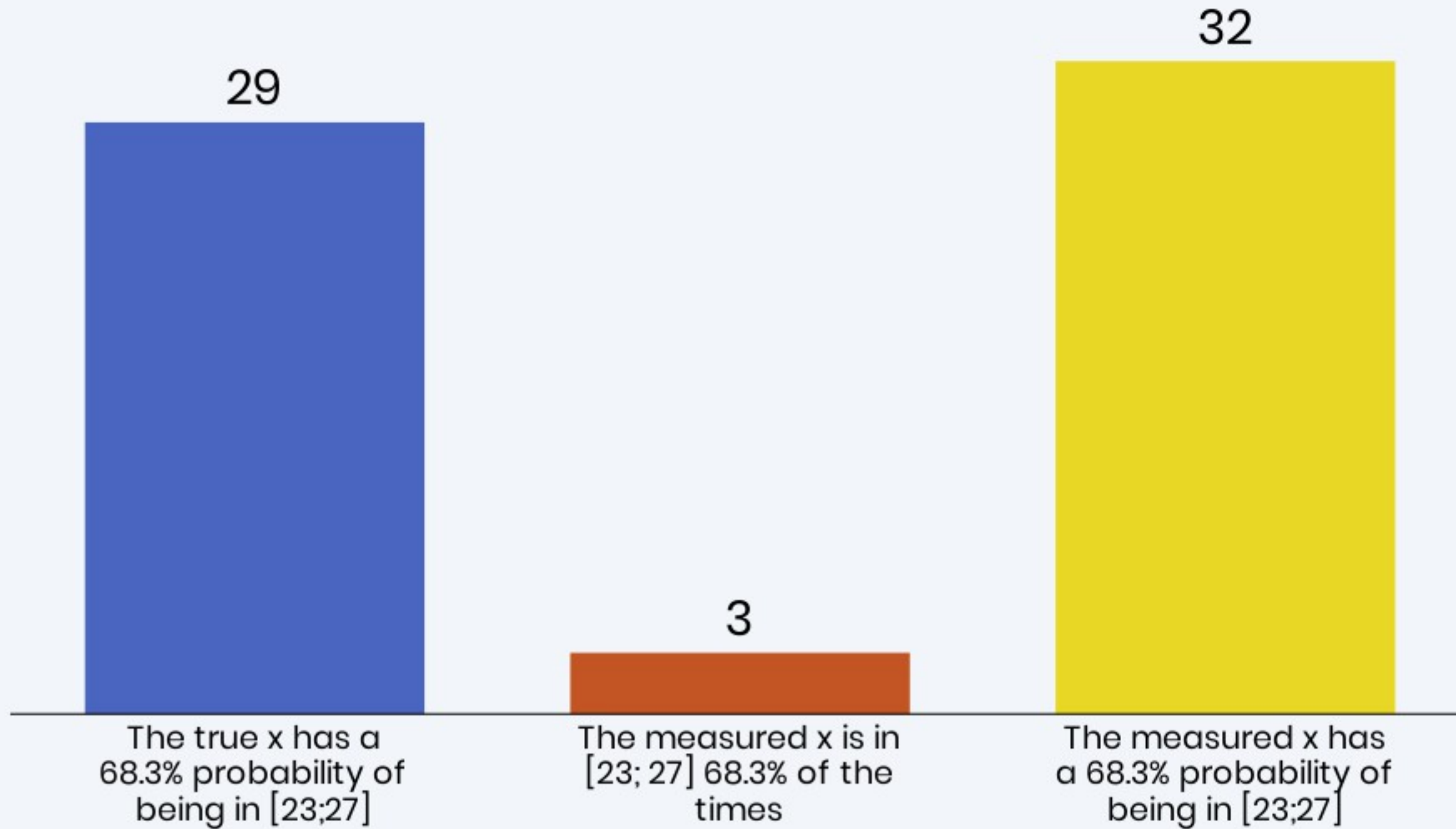
In frequentist terms, $x = 25 \pm 2$ means that the true x :



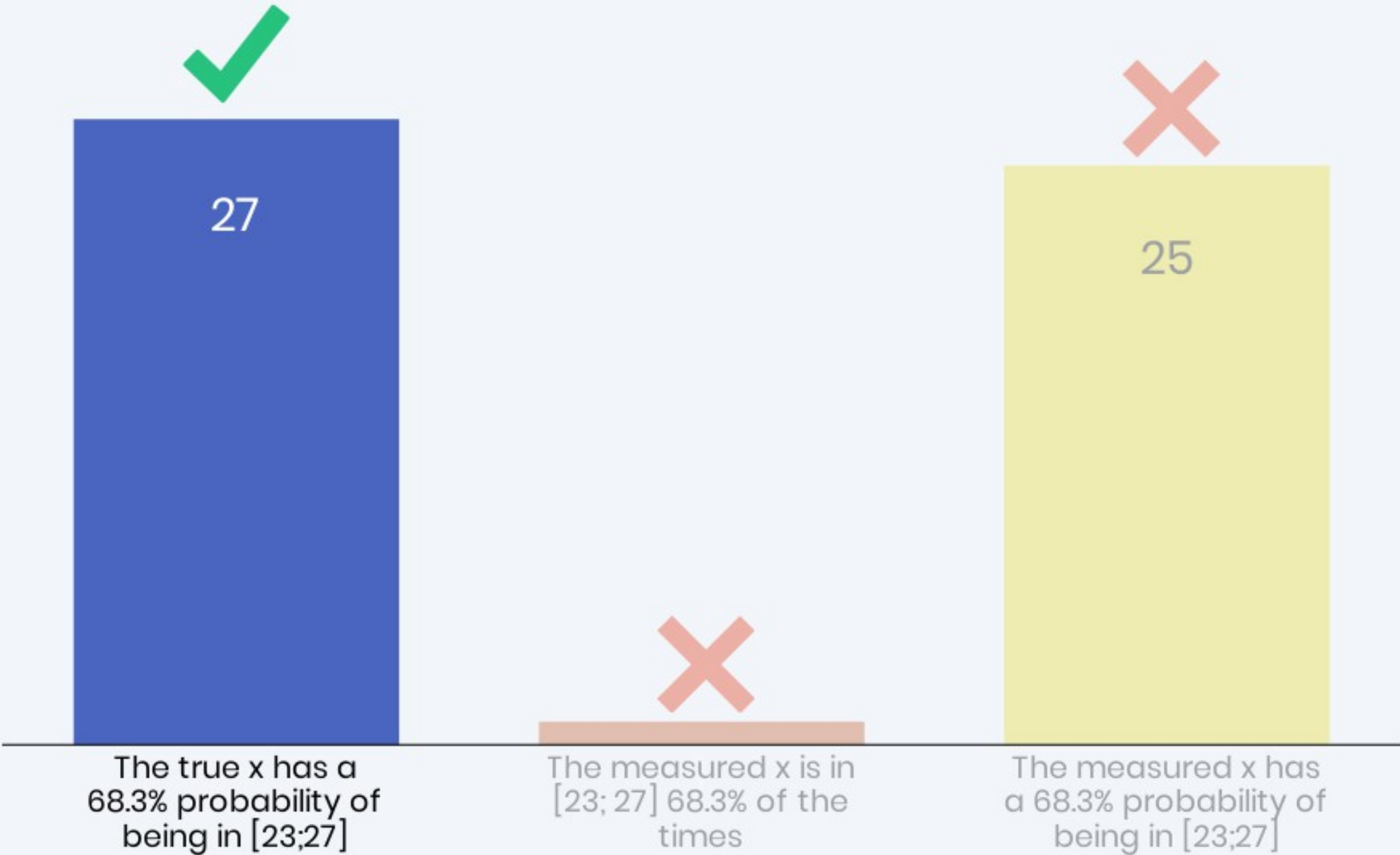
In frequentist terms, $x = 25 \pm 2$ means that the true x :



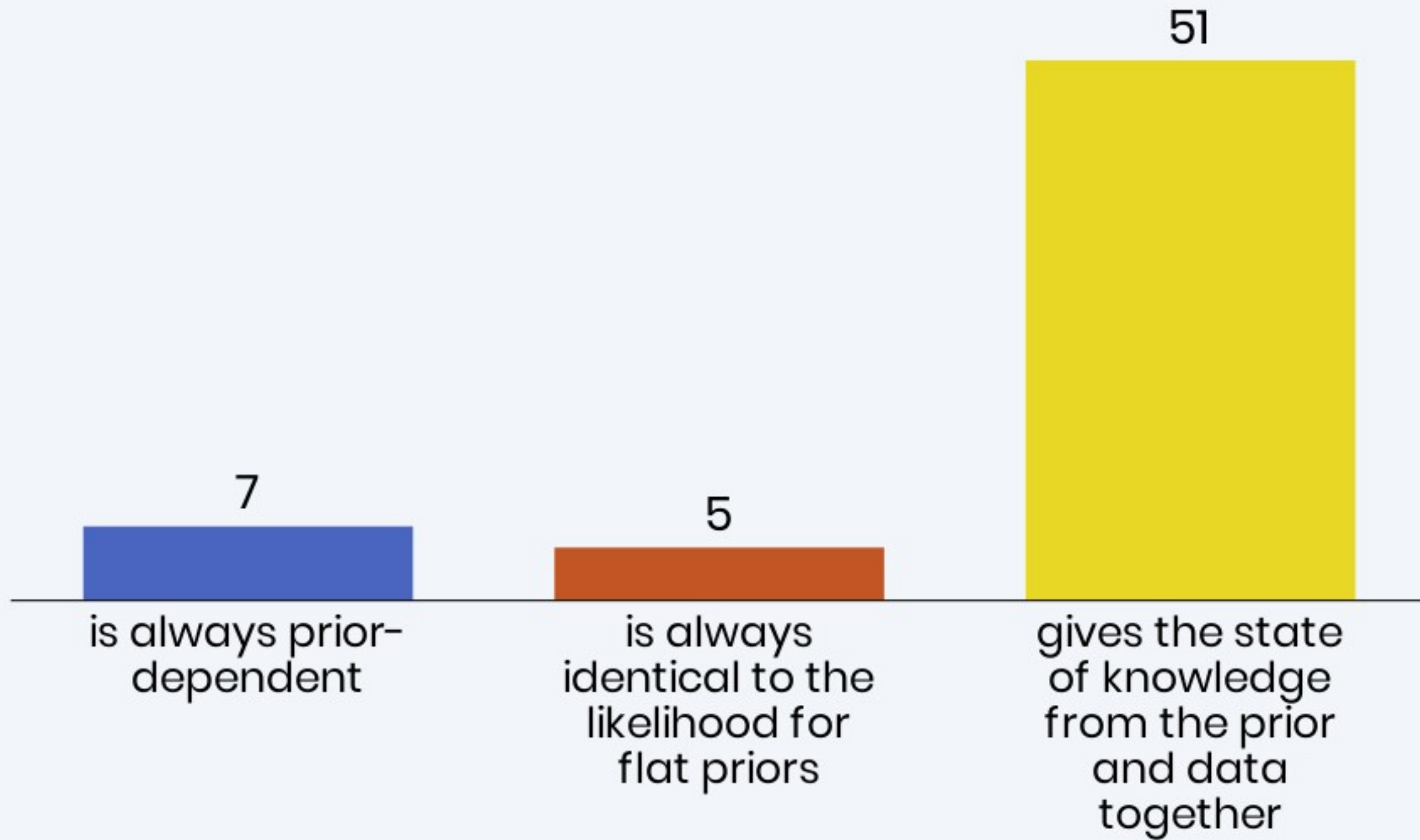
In Bayesian terms, $x = 25 \pm 2$ (1sigma) means:



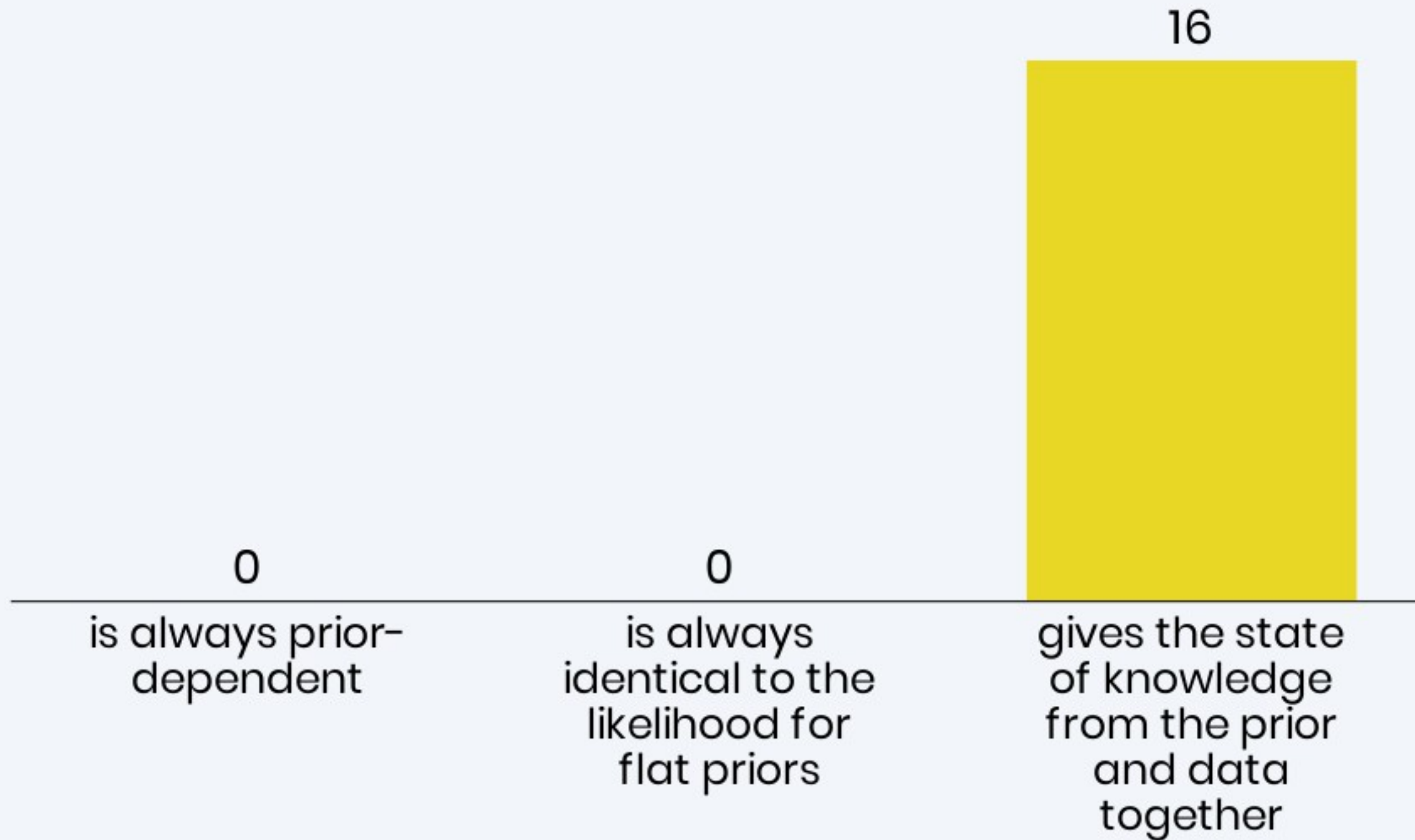
In Bayesian terms, $x = 25 \pm 2$ (1sigma) means:



The posterior pdf:



The posterior pdf:



The marginal posterior pdf:



Eliminates nuisance
parameters by
maximising over
them



Eliminates nuisance
parameters by
integrating over
them



Incorporates
nuisance
parameters in the ML
estimator

The marginal posterior pdf:

